

# S10

## Socket for Interface relay

**Type** **S10**  
 1-pole, 1 connection level  
 Logic wiring  
 Integrated retaining clip and labelling space  
 Coil bridge bar for A2, 11

**Rated current** **10 A**

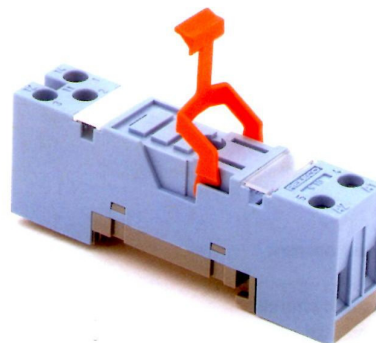
**Specifications**

Rated load	10 A / 250 V
Insulation	Test voltage V rms / 1 min
- All terminals/DIN rail	5 kV
Contact terminals	2,5 kV
Contact / Coil terminals	5 kV
Cross-section of connecting wire	
- Single-wire	4 mm <sup>2</sup> or 2 x 2,5 mm <sup>2</sup>
- Multi-wire	22 - 14 AWG
Max. screw torque	1,2 Nm
Screw dimensions	M3, Pozi, slot
Integrated retaining clip/plastic	for relay series C10, CSS
Labelling space	detachable
Connection label	1...5; DIN/EN
Mounting	DIN rail TS35 or mounting plate
Ambient temperature operation/storage	-40 (no ice)...60 °C / -40 ... 80 °C

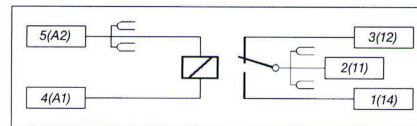
**Socket for plug-in 10A IRC relays** **C10-A, C10-T, CSS, C10-G**

**Accessories**

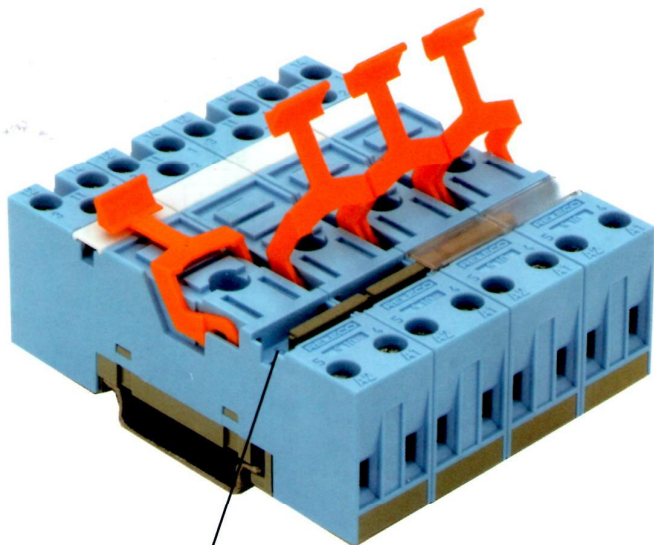
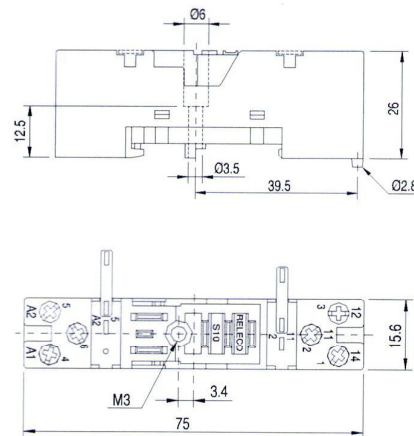
Coil bridge bars **S10-BB**



**Connection diagram**



**Dimensions [mm]**



BRIDGE BAR

**Technical approvals, conformities**



EN 60947-1, EN 61810-1