

**S3-B****Socket for 11-pin standard relay according to IEC 67-I-18b**

<b>Type</b>	<b>S3-B</b> 3-pole, 1 connection level Coding ring optional Integrated retaining clip and labelling space
-------------	--------------------------------------------------------------------------------------------------------------------

<b>Rated current</b>	<b>10 A</b>
----------------------	-------------

**Specifications**

Rated load	10 A / 250 V
Insulation	Test voltage V rms / 1 min
All terminals/DIN rail	2,5 kV
– Terminal/terminal	2,5 kV
Cross-section of connecting wire	
– Single-wire	4 mm <sup>2</sup> or 2 x 2,5 mm <sup>2</sup>
– Multi-wire	22 - 14 AWG
Max. screw torque	1,2 Nm
Screw dimensions	M3, Pozi, slot
Integrated retaining clip/plastic	for relay series C3
Labelling space	detachable
Connection label	1... 11; DIN/EN
Mounting	DIN rail TS35 or mounting plate
Ambient temperature	-40 (no ice)...60 °C / -40 ... 80 °C

**Associated, plug-in 11-pin MRC relays**

Suitable for holding the Releco coding ring  
For coding the relay and the socket.

**C3-A, C3-G, C3-T, C3-X, C3-M, C3-R,  
C3-E, C3-N, C3-S**

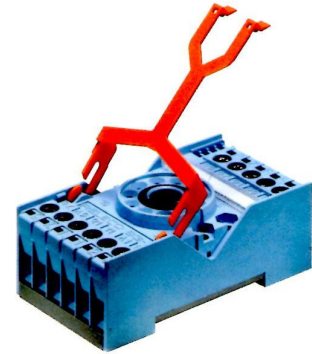
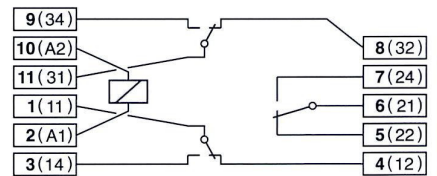
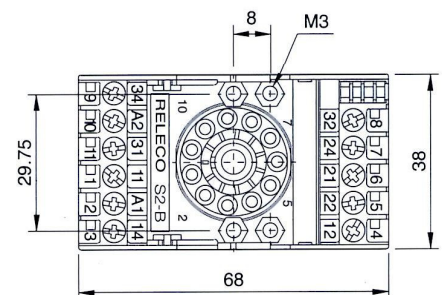
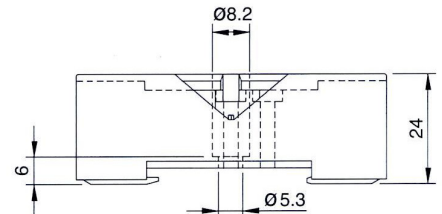
**Accessories****Coding ring, blue set:**

Retaining spring, steel

**S3-BC**

Packaging unit: 5 pcs

**S3-C, S3-CT** (with Timecube)

**Connection diagram****Dimensions [mm]****Technical approvals, conformities**

EN 60947-1, EN 61810-1