

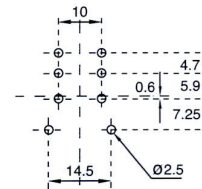
# S7-L, S7-P, S7-PO

Socket for PCB and soldering for miniature relays C7

|                                       |   |
|---------------------------------------|---|
| <b>Type</b>                           | <b>S7-L</b><br>2-pole, flange panel mountable       |
|                                       | <b>S7-P</b><br>2-pole, printed circuit              |
|                                       | <b>S7-PO</b><br>2-pole, printed circuit with flange |
| <b>Rated current</b>                  | <b>10 A</b>   |
| <b>Specifications</b>                 |   |
| Rated load                            | 10 A / 250 V  |
| Dielectric strength adjacent pin      | 2.5 kV rms / 1 min                                  |
| Connection label                      | 1...8; DIN/EN                                       |
| Integrated retaining clip/plastic     | for relay series C7                                 |
| Ambient temperature operation/storage | -40 (no ice)...60 °C / -40 ... 80 °C                |

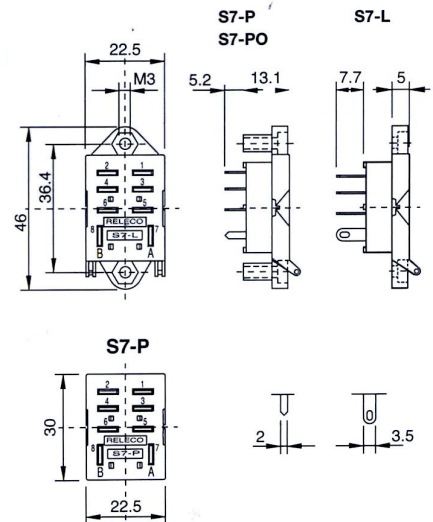


**Printed circuit lay-out [mm]**



S7-P  
S7-PO

**Dimensions [mm]**



Sockets

4

**Technical approvals, conformities**



EN 60947-1, EN 61810-1